

Curwen B

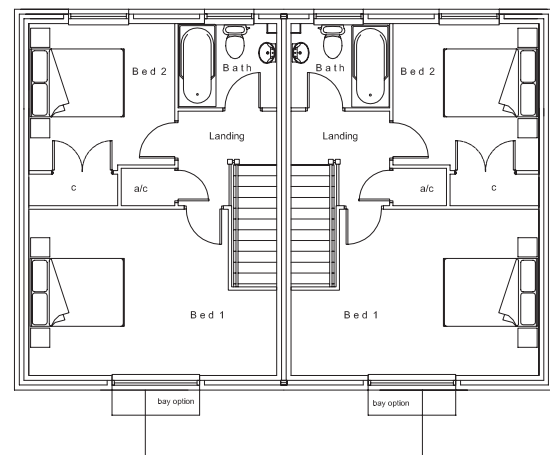
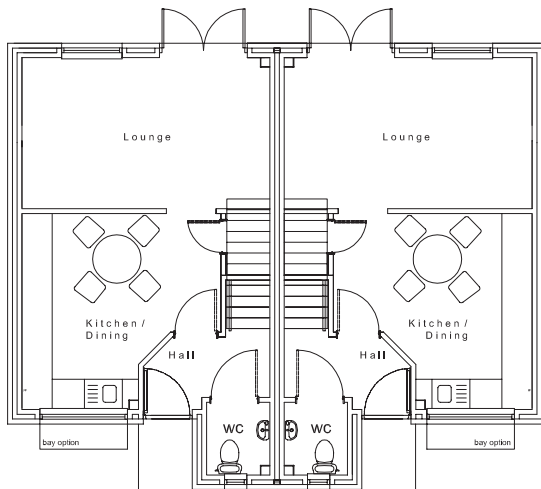
Curwen B



A comfortable two bedroomed house, ideal for first time buyers offering a high standard of fittings and lifestyle functionality.

Tŷ cyfforddus dwy ystafell, sydd â gosodiadau o safon uchel a ffordd o fyw ymarferol. Yn ddelfrydol ar gyfer prynwyr cyntaf.

Lounge	5.07m x 3.10m	16'7" x 10'0"
Kitchen/Dining	4.06m x 4.03m	13'3" x 13'2"
Bed One	5.07m x 3.40m	16'7" x 11'11"
Bed Two	2.98m x 3.00m	9'9" x 9'10"



Purchasers should note that the illustrations is a typical elevation and not necessarily specific. Specifications will vary from site to site and plot to plot, please consult a member of Alexanders Estate Agents for detailed plans and specifications which are available for inspection.