

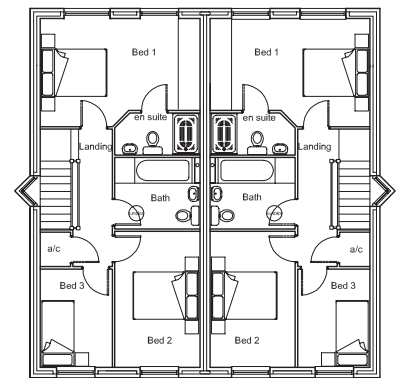
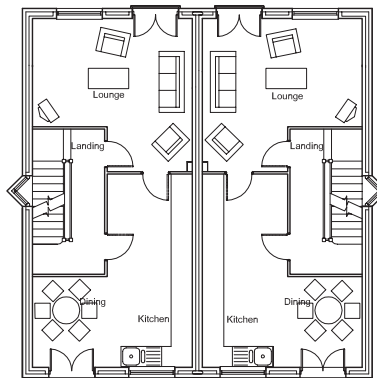
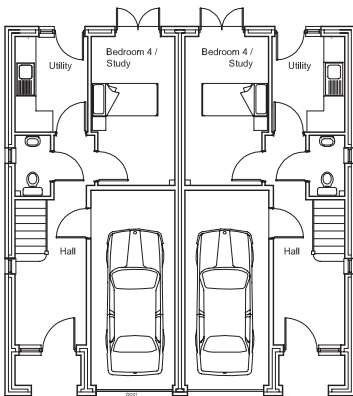
## Dyddgu 1



A splendid four bed roomed 'Town House', offering excellent family living space over three floors superbly designed for today's lifestyle needs.

Tŷ Tref' arbennig sy'n cynnig lleoedd byw rhagorol dros dri llawr i deulu. Mae wedi ei gynllunio'n ardderchog ar gyfer anghenion ffordd o fyw heddiw.

Lounge	4.55m x 4.75m	14'11" x 15'7"	Bed Three	2.91m x 2.14m	9'6" x 7'0"
Kitchen/Dining	5.70m x 4.75m	18'8" x 15'7"	Bed Four	3.18m x 2.50m	10'5" x 8'4"
Bed One	3.21m x 4.75m	10'6" x 15'7"	Garage	5.75m x 2.50m	18'11" x 8'4"
Bed Two	4.01m x 2.54m	13'1" x 8'4"			



Purchasers should note that the illustrations is a typical elevation and not necessarily specific. Specifications will vary from site to site and plot to plot, please consult a member of Alexanders Estate Agents for detailed plans and specifications which are available for inspection.